

Product availability: Stock - Normally stocked in distribution facility

Price*: 108.75 USD



Main

Range of Product	Modicon M171/M172
Product or Component Type	Additional I/O module
Product Specific Application	HVAC and pumping solution
Number of inputs/outputs	14
Discrete input number	4
Discrete output number	1 relay outputs SPDT with independent common 3 relay outputs SPST with same common
Discrete output current	3 A relay
Analogue input number	4 configurable by pair
Analogue output number	2 voltage 0...10 V

Complementary

Number of port	1 CAN port - screw terminal block
Input/output number	2 analog output 4 digital output 4 analog input 4 digital input
Discrete input logic	Sink or source (positive/negative)
Discrete input voltage	24 V AC/DC
Discrete input current	2.5 MA
Input impedance	20 kOhm
Analogue input type	Voltage 0...5 V ratiometric) Current 4...20 mA Voltage 0...10 V NTC temperature probe - 50...110 °C 0.1 °C NTC temperature probe - 40...137 °C 0.1 °C extended) PTC temperature probe - 50...150 °C 0.1 °C
Sensor power supply	12 V DC 85 mA
[Us] rated supply voltage	24 V

The information provided in this documentation contains general descriptions and/or technical characteristics of the performance of the products contained herein. This documentation is not intended as a substitute for and is not to be used for determining suitability or reliability of these products for specific user applications. It is the duty of any such user or integrator to perform the appropriate and complete risk analysis, evaluation and testing of the products with respect to the relevant specific application or use thereof. Neither Schneider Electric Industries SAS nor any of its affiliates or subsidiaries shall be responsible or liable for misuse of the information contained herein. *Prices are indicative

Ordering and shipping details

Category	22537 - M171 / M172 HVAC CONTROLLERS
Discount Schedule	PC12
GTIN	03606480752704
Nbr. of units in pkg.	1
Package weight(Lbs)	8.43 Oz (239 g)
Returnability	Yes
Country of origin	IT

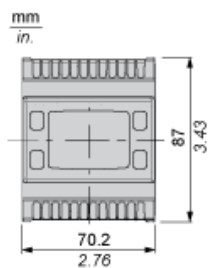
Packing Units

Unit Type of Package 1	PCE
Package 1 Height	3.58 In (9.1 cm)
Package 1 width	5.12 In (13 cm)
Package 1 Length	7.48 In (19 cm)
Unit Type of Package 2	S02
Number of Units in Package 2	6
Package 2 Weight	3.72 Lb(US) (1.689 kg)
Package 2 Height	5.91 In (15 cm)
Package 2 width	11.81 In (30 cm)
Package 2 Length	15.75 In (40 cm)

Offer Sustainability

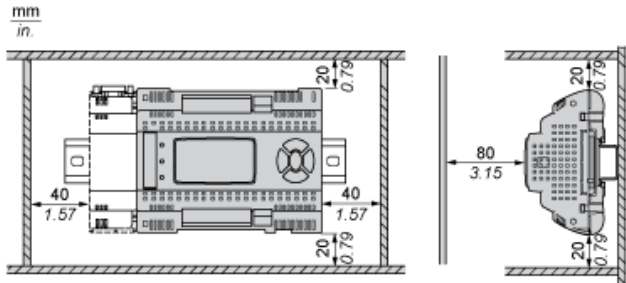
Sustainable offer status	Green Premium product
California proposition 65	WARNING: This product can expose you to chemicals including: Lead and lead compounds, which is known to the State of California to cause cancer and birth defects or other reproductive harm. For more information go to www.P65Warnings.ca.gov
REACH Regulation	REACH Declaration
REACH free of SVHC	Yes
EU RoHS Directive	Pro-active compliance (Product out of EU RoHS legal scope) EU RoHS Declaration
Mercury free	Yes
RoHS exemption information	Yes
China RoHS Regulation	China RoHS Declaration
Environmental Disclosure	Product Environmental Profile
Circularity Profile	End Of Life Information
WEEE	The product must be disposed on European Union markets following specific waste collection and never end up in rubbish bins.

Dimensions

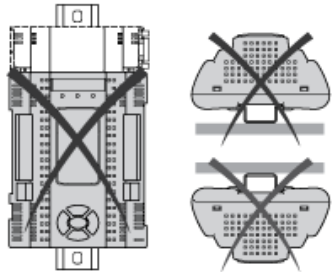


Mounting and Clearance

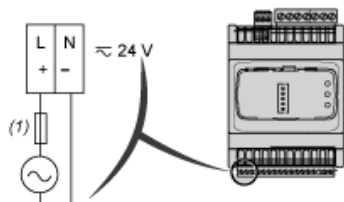
Clearance



Misplacement

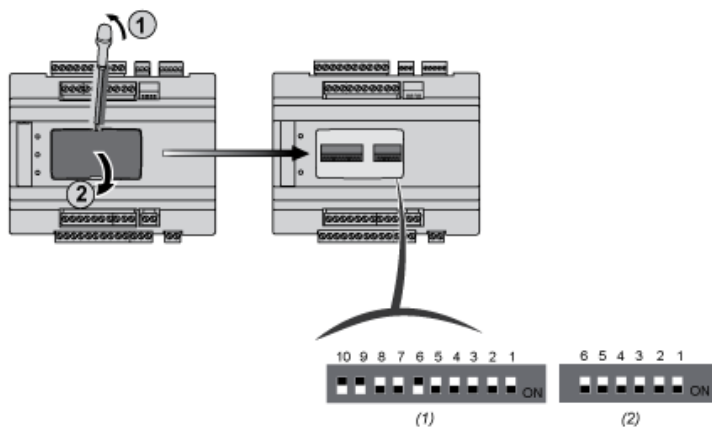


Power Supply



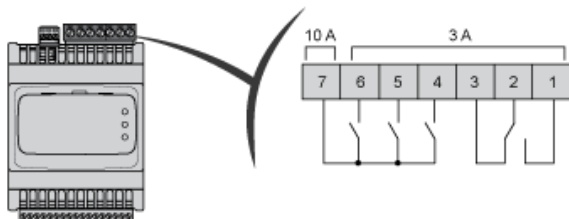
(1) Type T fuse 1.25 A

6 - 10 DipSwitches



(1) 10 DIP SWITCH
(2) 6 DIP SWITCH

Digital Outputs



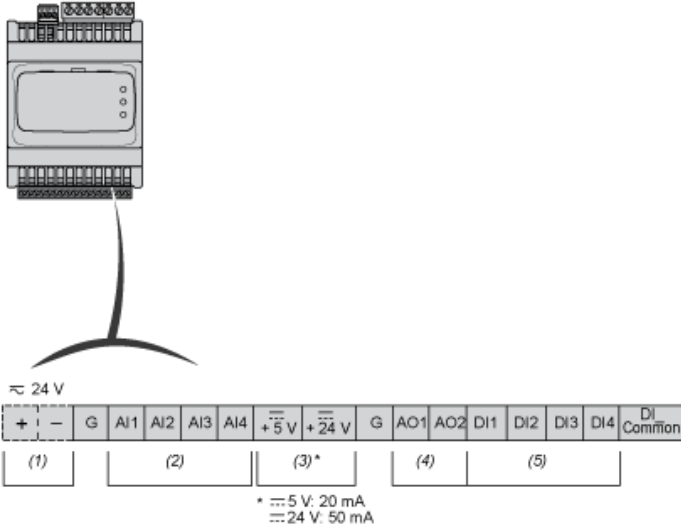
N°	Pin -out
1	DO1-N.O.
2	COMMON DO1
3	DO1-N.C.
4	DO2-N.O.
5	DO3-N.O.
6	DO4-N.O.

N°	Pin -out
7	Common DO2, DO3,DO4

N.C.: Normally Closed

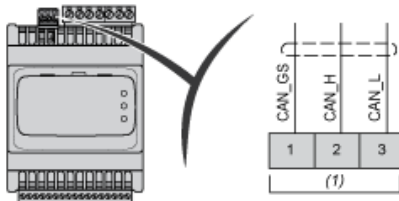
N.O.: Normally Open

Low Voltage I/O



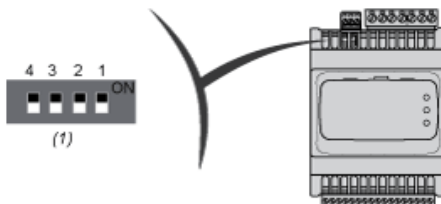
- (1) Power Supply
- (2) Analog Input
- (3) Power Out
- (4) Analog Output
- (5) Digital Input

Expansion Bus (CAN)



- (1) CAN

4 DipSwitches



- (1) LOW Address

Product Life Status : **Commercialised**